



About Acme Portable Machines

Founded in 1994, Acme Portable has been supporting the needs of the US Military and Prime Contractors with MIL-STD spec ruggedized portable computing and display solutions for decades.

We pride ourselves in building rugged systems that are thoroughly tested to meet the toughest requirements. Our portable solutions are designed to be fully configurable with additional PCIe slots, large storage capacity, and multiple displays. We are constantly increasing the capabilities of our portable computing solutions to meet increasingly challenging workloads in harsh environments.

CONTACT US

Acme Portable Machines, Inc.

1330 Mountain View Circle
Azusa, CA 91702 USA

Phone: (626) 610-1888

Email: sales@acmeportable.com

www.acmeportable.com



Acme Portable Computer GmbH

Benzstraße 15
76185 Karlsruhe, Germany

Phone: +49 (0) 721-570 453-0

Email: info@acmeportable.de

www.acmeportable.de



Acme Portable Computer TW

5F, No. 25, Wu Chuan 3rd Road,
Wu-Ku Ind. Park, New Taipei City,
Taiwan

Phone: +886 (2) 2298-3636

Email: info@acmeportable.com.tw

www.acmeportable.com.tw



MISSION-CRITICAL RUGGEDIZED PORTABLE COMPUTING SOLUTIONS



Acme Portable Machines



AI READY

**FULLY
CUSTOMIZABLE**

RUGGED

**RAPID
DEPLOYMENT**

31 YEARS IN BUSINESS

SINCE

Sept 26, 1994 Acme Headquarters

June 13, 1997 Acme Taiwan | July 12, 2006 Acme Germany

For more than three decades, Acme Portable has proudly stood at the forefront of designing and manufacturing the most advanced portable computing solutions in the world. What began as a small endeavor has grown into a global leader in high-performance, rugged, and versatile computing technologies. Throughout our journey, we have continuously pushed the boundaries of innovation, delivering products that set new standards in reliability, durability, customization, and customer satisfaction across various sectors.

Our portable systems are engineered for the most demanding applications across various industries. Whether it's digital media production, live broadcasting, military operations, government projects, or industrial applications, our products are designed to withstand the toughest environments while ensuring top-tier performance. Each system is meticulously crafted to meet the specific requirements of our diverse clientele, providing unparalleled functionality and adaptability.

As we reflect on the past 30 years, we are filled with



pride for all that we've accomplished. Our success is a testament to the passion, expertise, and dedication of our incredible team, who continually push the limits of technology to meet the evolving needs of our customers. We're also immensely grateful to our trusted partners and loyal customers, whose support has been instrumental in our growth and success.

But we're not stopping here. With the same spirit of innovation that has driven us from day one, Acme Portable is ready to embrace the future. We are committed to continuing our legacy of excellence, delivering cutting-edge solutions that empower our clients to excel in their respective fields. As the industry evolves, we are also poised to leverage advancements in artificial intelligence, cloud computing, and cybersecurity to further enhance our offerings and capabilities. Together, we will continue to break new ground, setting the standard for the next generation of portable computing systems.

Here's to the next chapter of Acme Portable—where innovation knows no bounds, and success is built on a foundation of hard work, collaboration, and unwavering commitment to excellence. Thank you for being part of our journey. We look forward to many more years of pushing the limits of what's possible!

Sep 26
1994

Acme USA, Headquarters
Established

Acme was founded in the U.S. in 1994 with a vision to deliver portable, high-performance computing solutions tailored for industrial and field applications. This strategic focus on durability and flexibility laid the groundwork for Acme's emergence as a leader in the portable technology sector.

Jun 13
1997

Acme Taiwan
Established

In 1997, Acme expanded to Taiwan to tap into the Asian market, strengthening its global supply chain and fostering local innovation. This marked a significant step in Acme's global growth.

Jul 12
2006

Acme Germany
Established

In 2006, Acme established its European headquarters in Germany to better support the expanding European market. This move strengthened Acme's global reach and reaffirmed its commitment to providing cutting-edge portable solutions to customers worldwide.



Acme's Global Milestones

Charting Success Across Continents

Rugged | Deployable | Workstations & Servers

High- Performance | Mission Specific | Displays

Performance Hardware For Mission Critical Applications

Proudly Made In The USA

Table of contents

01	Quality2	09	Portable KVM.....51
	a. Quality Assurance- ISO 9001		a. Portable keyboard, video, and mouse (KVM) solutions
02	Markets and Applications.....3	10	Portable Rugged Display.....53
	a. Versatile Solutions for Specialized Applications		a. Robust display solutions designed for harsh environments
			b. Rugged display solutions
03	Why Acme Portable.....5	11	Portable Transit Case.....59
	a. Innovation & Technology		a. Custom transit cases
	b. Quality & Experience		
	c. Global Presence		
	d. Customization		
	e. Product Life Cycle		
	f. Proven Track Record		
	g. Software Flexibility		
	h. Customer Service		
04	Partners and Customers.....7	12	Rackmount Flight Case Displays.....61
	a. Technology Partners		
	b. Global Customers		
05	Product Graphics.....9	13	Rackmount Solution.....67
	a. Quality Assurance- ISO 9001		a. High-performance rackmount servers and displays
			b. Rugged rackmount servers
			c. Rackmount displays
06	Portable AI Solution.....19	14	Rackmount KVM.....69
	a. AI video processing and analysis		a. Portable keyboard, video, and mouse (KVM) solutions
	b. Advanced AI-Powered Video Solutions		
07	Acme Product features.....21	15	Portable & Rackmount Interface and Power cables.....73
			a. Interface and power cables
08	Portable Systems.....23	16	Custom Designs..... 75
	a. High-performance portable workstations		
	b. Rugged multi-display workstations		
	c. Rugged high density workstations		
	d. Rugged portable workstations	16	Product Matrix.....77

Quality Assurance ISO 9001

Ensuring Mission-Critical Reliability and Performance

ISO 9001 Certified for Unmatched Quality

Our ISO 9001 certification ensures we meet the rigorous quality standards of the defense and industrial sectors, delivering durable and reliable equipment for mission-critical applications.

Built to Perform in Harsh Conditions

We craft products to endure extreme environments, offering customizable features like dustproofing, waterproofing (IP ratings), and shock resistance. Each product undergoes rigorous testing, ensuring consistent reliability and superior performance in even the harshest conditions.



Tailored Solutions with Military-Grade Standards

Our products meet military standards and are designed for future-proof integration and seamless upgrades, providing reliable solutions in the toughest operational environments.

Continuous Quality and Innovation

Our commitment to excellence is reinforced by ISO 9001, ensuring efficient production, strict inspections, and high-performance products for demanding industries. Choose us for reliability and innovation.





Government Military Test Measurement

Intelligence Carry-On Program
Information Technology
Optical Gas Imaging
UAV
Geospatial Intelligence

ACME Portable has decades of experience providing Mil-Spec ruggedized portable computing and display solutions to the US Military and Prime Contractors. We specialize in three key military platforms:

- C4ISR (Command, Control, Communications, Computers, Intelligence, Surveillance, and Reconnaissance)
- Test and Measurement (TM)
- Virtual Training Applications

Our rugged portable computers are designed to operate reliably in extreme environments, from harsh temperatures to rough terrains. Built to exceed military standards, they ensure secure communication, real-time data processing, and seamless interoperability in the field. These systems support tactical command centers and reconnaissance missions.

Our solutions offer modular configurations for mission-specific needs. Whether for data encryption, high-speed computing, or satellite communications, our technology enhances decision-making in critical scenarios.

We build rugged, high-performance portable workstations for test and measurement applications, ideal for network professionals requiring real-time data capture with substantial storage and fast write performance. Our platforms support 20G/40G/100G network capture for telecom carriers and 1G/10G for enterprises, using high-speed RAID cards and swappable HDD/SSD for flexible storage.

Our solutions address network deployment, performance monitoring, troubleshooting, and security monitoring. These workstations are essential for industries managing 5G networks, IoT, and large-scale data transmission, providing the precision and reliability needed for telecom, aerospace, and other sectors.

ACME's platforms are designed for scalability, adapting to evolving standards and increasing data demands. With real-time processing power and modular flexibility, they simplify even the most complex network tasks.

Markets and Applications

Versatile Solutions for
Specialized Applications

Acme Portable is an industry-leading manufacturing company that specializes in rugged portable computers. We strive to achieve the power and configurability of a desktop with the convenience and portability of a laptop. It is a powerful system that combines the best of both worlds – a solution that you can deploy at any location.

Our computers are used for a variety of special applications, and our knowledgeable staff are ready to assist you in any possible way. They will understand the challenges you may face, know which unit you will need, which hardware should be integrated, and which 3rd party cards should be installed.

They work with you throughout the entire process to help you get exactly what you need. The list below shows a few of the markets and applications where our computers are being used.



WHY ACME PORTABLE

Innovation and
Cutting-Edge Technology



Innovative Products for Modern Needs
Our products feature the latest technology to meet the demands of industrial and military applications, offering AI computing and extreme condition reliability.

Quality



30+ Years of Industry Experience
we are committed to delivering top-quality, custom-built portable solutions.

Global Presence



Worldwide Support Anytime, Anywhere
ACME Portable operates globally, ensuring support and sales are always within reach via chat, phone, or email.

Customization



Solutions Tailored for You
We collaborate to create solutions that meet your unique operational requirements.

Extended Product Life Cycle



Built to Last, Designed for Durability
Our systems are engineered to perform in the harshest environments, with maintenance plans that extend product longevity and minimize downtime.

Proven Track Record



Trusted by Top-Tier Clients
ACME Portable is a trusted provider for industries such as defense, healthcare, and manufacturing, consistently exceeding client expectations.

Software Flexibility



Adaptable to Your Needs
Our flexible software solutions ensure seamless integration with your systems, providing the tools you need for smooth operations.

Excellent Customer Service



Dedicated Support at Every Step
Our experienced team is ready to help you find the ideal portable solution with expert advice and exceptional service.



intel

AMD

nvidia

Microsoft

Red Hat

Driving Excellence Worldwide

Partners in Progress

Partners

We work with top-tier technology partners to provide innovative and high-performance solutions, ensuring we stay at the forefront of industry advancements.

Global Reach,
Trusted Solutions

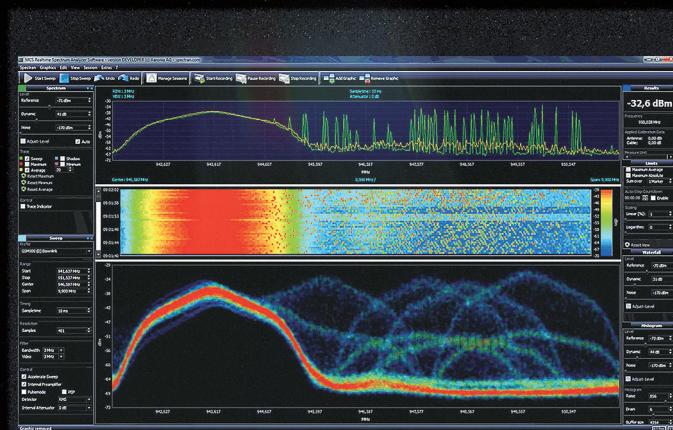
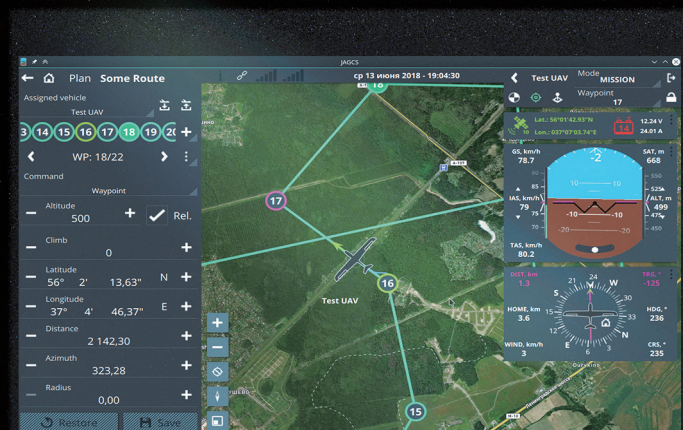
Customers

Our global customer base spans various industries, trusting us to deliver reliable and customized solutions that meet their unique requirements.

Collaborating for Success

Shaping the Future Together





Triple Screens, Total Control

Connect to 3 projectors for seamless presentations



NotePAC III pro V

System with 17.3" FHD or UHD 144Hz displays
with HDMI ports for projectors

Acmeportable.com

Dual Screens for UAV Mastery



MegaPAC L2

System with
23.8" FHD or UHD displays

**Designed for drone operations
and live mission control**

Acmeportable.com

Rugged Power for Field Operations



FlexPAC L3

System with
18.5" FHD or UHD displays

**Ideal for AI modeling, lab research,
and defense applications.**

Acmeportable.com

Expand Your Vision



BCCD 270
with 27" FHD or UHD displays

For collaboration, monitoring,
and precision analytics

Acmeportable.com

BCCD 173

with 17.3" FHD or UHD displays



Plug and Play!



One USB-C Cable Triple the Screens.



DELL



Getac



Panasonic



DURABOOK



roda
RUGGED IT & ELECTRONICS



mildeF

UNLEASHING EDGE COMPUTING SOLUTIONS

Market	Applications	Use Cases
Defense	Reliable, high-performance edge compute for real-time sensor fusion, mobile command, and surveillance. Systems scale from efficient AI inferencing to flagship workstation-class acceleration while maintaining ultra-low latency and rugged reliability.	<div>» Mobile Command Centers:</div> <div>- Real-time AI recognition / alerts for vehicles, ships, and drones.</div> <div>» Real-time AI Deep Learning:</div> <div>- On-device tracking, target re-ID, and engagement logic when threats are detected.</div> <div>» Lossless Transmission:</div> <div>- 10G–25G transmission with low latency for multi-stream 4K/8K video.</div>
Industrial	Scalable edge platforms for robust data handling and real-time analytics in factories, logistics, and energy sites—built for continuous operation and fast decision-making.	<div>» Data Processing and Monitoring:</div> <div>- Multi-screen, low-latency visualization of large data flows</div> <div>» Generative AI for Scenario Analysis:</div> <div>- Defect detection, debris / fire recognition, and safety assurance.</div> <div>» Advanced AI Planning:</div> <div>- Rapid retrieval and reasoning over video, sensor, and document data.</div>

Why We’re Different

Performance Tiers	Flagship (Blackwell / Instinct) · High-End (Ada+) · Efficient (low-power RTX). <i>Always updated, configured per project.</i>
Modern Backbone	PCIe Gen4/5 · OCuLink/MCIO NVMe · DDR5 ECC · 10/25GbE.
Tailored Mission	Mechanical design tailored to fit your choice of GPUs, motherboards, connectors and more. Ensuring rugged reliability, long lifecycle, and seamless AI integration



ACME

Product Features

A collection of advanced features designed to empower field operations, AI computing, and rugged deployments in any environment.



AI-Ready Architecture

Optimized for deep learning and real-time inference, enabling advanced AI applications at the edge and in mission-critical environments.



High-Performance GPU Support

Supports NVIDIA RTX A-series and other enterprise GPUs for AI inference, rendering, and data-intensive tasks.



Customized Works

We deliver tailored hardware and integration to meet unique operational and environmental needs.



Power Supply

High-efficiency power module designed for stable performance and protection in demanding industrial and defense applications.



Battery

Reliable hot-swappable battery system ensures continuous operation in the field, even during power interruptions.



RGB Keyboard

Backlit RGB keyboard with customizable lighting, providing clear visibility and usability in dark or mobile environments.



Touch Screen

Multi-touch display for intuitive control and quick operation, optimized for field or command center applications.



Sunlight-Readable Display

Up to 1200 nits of brightness for crystal-clear visibility in outdoor or high-glare environments.



Custom I/O Interface

Flexible I/O configuration supports SDI, HDMI, 10GbE, and other interfaces to fit any mission requirement.



Quick-Release Storage Bay

Tool-free removable SSD trays enable fast data access, replacement, and secure maintenance in the field.



Rugged Chassis

Precision CNC-milled aluminum chassis built to withstand vibration, shock, and extreme environmental conditions.



MIL-STD Certification

Engineered to meet the durability and reliability expectations of military-grade equipment.

Rugged Multi-Display Workstations

NotePAC III Lite with integrated batteries

The NotePAC III Lite is our advanced, triple-screen portable computer designed with a unique, built-in hot-swappable battery system that enables smooth, uninterrupted power transitions. This feature ensures continuous operation, even in challenging or remote environments where power stability is critical. Compared to the larger NotePAC III Pro V model, the Lite version boasts a much lighter, more compact design due to its integrated battery system, significantly reducing the unit's overall weight. This makes it far more portable and easy to handle, enhancing its appeal for professionals who are constantly on the move. Users can now perform mission-critical tasks with ease and improved mobility, whether they are operating in the field or a mobile command center.

Not only does the NotePAC III Lite deliver impressive performance, but it also offers flexible power options that make it ideally suited to high-demand, intensive work scenarios. Whether in the command center, on the road, or deployed in challenging outdoor conditions, this versatile model guarantees dependable, long-lasting performance, supporting users in achieving mission success. Designed with durability and adaptable power management in mind, the NotePAC III Lite is engineered to withstand tough conditions and meet the rigorous demands of professional environments. With the added confidence that their equipment can handle complex, time-sensitive tasks, users can focus on achieving their objectives, knowing that the NotePAC III Lite is built to support their success in any situation.



NOTEPAC III LITE WITH BATTERIES



NOTEPAC III LITE WITH BATTERIES



Features:

- » Integrated battery for 1.5+ hour of uninterrupted operation
- » Triple HDMI outputs for display mirroring
- » Compact and lightweight design
- » Hot swap battery



Specs:

- » Triple 17.3" FHD 144Hz displays
- » CPU:
 - » Spec 1: Intel Core i7-13700E processor
 - » Spec 2: Intel Xeon D-2796NT processor
- » Memory: 64GB DDR4 or up to 512GB LRDIMM with Xeon
- » GPU: Intel UHD Graphic or ASPEED AST2600
- » Expansion Slots: 1x PCIe x 16 slot
- » Storage: 1TB and 2x 2.5" removable drives
- » Battery: 2x 14.4V, 6700mAh battery
- » Dimensions: 17.42" x 13.7" 7.72"



Options:

- » Custom system configuration
- » Single and dual displays versions
- » PNY P2200 or RTX 4000
- » Modular Display Add-On
- » Transit case
- » External battery charging station
- » Customization available
- » Custom I/O

Rugged Multi-Display Workstations

NotePAC III Pro V & NotePAC II Pro V

The NotePAC Pro V series is the premier choice for mission-critical operations, serving as an ideal deployable command and control center. It offers versatile double or triple display configurations, making it well-suited for applications such as Geographic Information Systems (GIS), C6ISR, and other intelligence-driven tasks. For command centers or Combat Information Centers (CIC), the triple displays can be duplicated through HDMI outputs, allowing for effortless integration and clear visibility of essential data across multiple screens, which enhances operational efficiency and situational awareness.

In terms of performance and security, the NotePAC Pro V series is unmatched. Powered by Intel Xeon CPUs, it provides scalable performance and high reliability to handle demanding workloads. To address stringent security requirements, users can opt to upgrade to FIPS 140-2 SSDs, which deliver full drive hardware encryption to safeguard sensitive information. Additionally, advanced connectivity options support redundancy, failover, and network or device isolation, offering flexible connectivity solutions that enhance operational resilience. This ensures the NotePAC Pro V series is ready to meet the rigorous demands of any mission, providing reliable and secure functionality in critical environments.



NOTEPAC III PRO V



NOTEPAC II PRO V



Features:

- » Triple HDMI outputs for display mirroring
- » Dual 10GbE, dual 10GbE SFP+ and quad 1GbE LAN ports
- » Built-in CAC card reader
- » MIL-STD-461 / MIL-STD-810G / MIL-STD-901E



Specs:

- » Single, dual or triple 17.3" FHD 144Hz displays
- » CPU: Intel Xeon D-2183IT processor with AST2500
- » Memory: 64GB DDR4 ECC RAM (upgradable to 512GB)
- » GPU: RTX 4000
- » Expansion Slots: 1x PCIe x8
- » Storage: 4x removable 8TB SSD drives
- » Dimensions: 17.42" x 13.7" x 6.1"



Options:

- » Custom system configuration
- » Modular Display Add-On
- » Battery Expansion Pack
- » Transit case
- » Customization available
- » Custom I/O

Rugged Multi-Display Workstations

17.3" Modular Display Add-On for NotePAC Series

The NotePAC Series can be enhanced with a modular display add-on. This additional display allows for even more screen space and display configurations. This additional display is easy to attach and mounts to the top center of the unit in less than a minute. The increase in screens greatly increases efficiency and productivity. When compared to single-monitor settings, organizations that used two or more displays were able to enhance productivity significantly.

The extra screens are suitable for mission-critical applications, geographic maps, GIS data, and other spatial visuals, allowing real-time data access without toggling between tabs. This added screen space ensures essential information remains easily accessible, enhancing efficiency in field operations and control room settings alike.



17.3" MODULAR DISPLAY ADD-ON



NOTEPAC PRO V WITH 17.3" MODULAR DISPLAY ADD-ON



Features:

- » Modular design with a single USB-C connection
- » Low power consumption
- » Modular display is compatible with all the NotePAC units



Specs:

- » 17.3" FHD display
- » 350 nits display
- » 800:1(Typical) Contrast Ratio



Options:

- » Touchscreen
- » 1000 nits display
- » Customization available
- » Custom I/O

Rugged

Multi-Display Workstations

Battery Expansion Pack for NotePAC Series

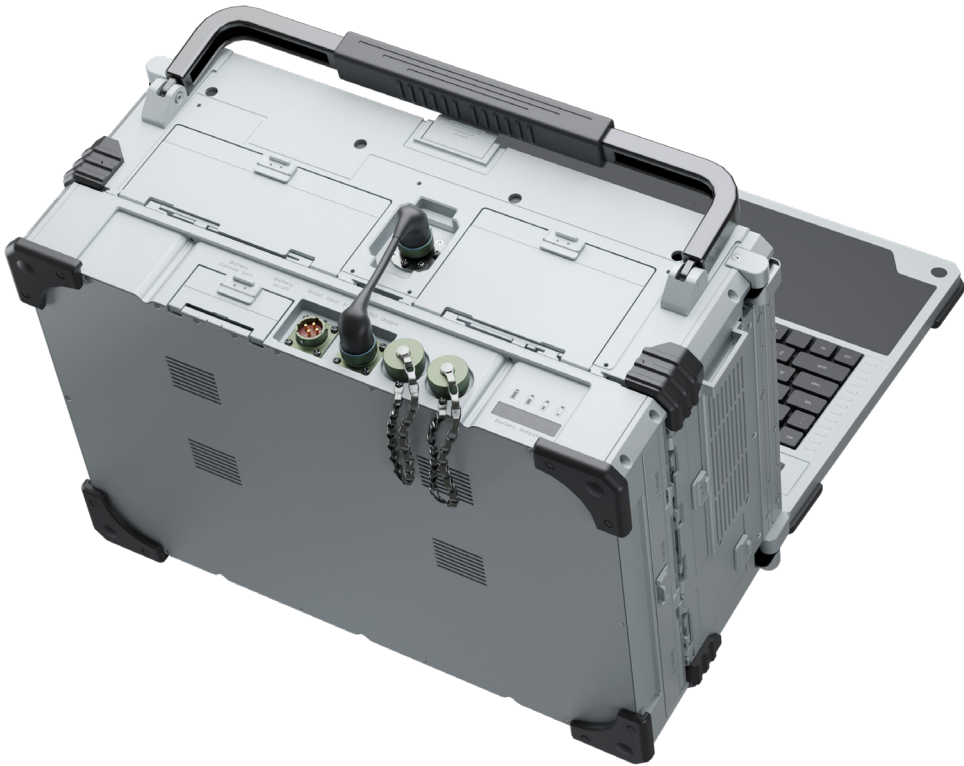
The add-on battery expansion pack charges the hot-swappable batteries, and it includes an AC-DC adapter and a power cord.

The charging dock features a DC-input receptacle, six battery slots, and six LEDs for power and charging indicators. Connect the AC-DC adapter cable to the DC-input receptacle and then insert the battery packs into each slot to charge.

After inserting the battery pack in the slot, the LED indicators light up orange when charging. When fully charged, the LED indicators will turn blue.



HOT SWAP BATTERY EXPANSION PACK



NOTEPAC III PRO V WITH HOT SWAP BATTERY EXPANSION PACK



Features:

- » Battery expansion pack provides 2+ hours of uninterrupted power
- » Charge status with LED indicators
- » Battery health management software
- » Safe for air travel or shipment
- » Hot swap battery design
- » Supports high performance system and GPU card
- » Battery expansion pack is compatible with all the NotePAC units



Specs:

- » Six 14.4V, 6700mAh / 96.48Wh (DR202S-4S) batteries
- » 600W, 19VDC, 31.6A power adapter
- » Dimensions: 17.3" x 12.06" x 2.66"



Options:

- » Battery charging station
- » External Battery charging station
- » Customization available
- » Custom I/O

Rugged Multi-Display Workstations

MegaPAC L1, L2 ,L3 & CR with 23.8" displays

The MegaPAC series is the most powerful portable command and control center in our product lineup. These extended-ATX compatible units can accommodate the latest Dual Xeon Scalable processors, the most advanced GPUs, and have seven full-length expansion slots available. High powered fans cool down the unit efficiently and prevent over heating even while running the most demanding applications. With large 23.8" UHD 1000 nit displays, critical details are easily viewable even in harsh sunlight.

This powerhouse of a system is suitable for C6ISR, training and simulation, UAV ground control, drone/threat detection and as a communications suite. In comparison with the more compact NotePAC series, this full-size series has the space for any configuration imaginable.



MEGAPAC L2



MEGAPAC L3



MEGAPAC L1



MEGAPAC L2 CR



Features:

- » High performance and flexible configurability
- » High brightness sunlight readable displays
- » Full sized rugged portable workstation or server
- » Rolling case for easy transport
- » Touchscreen bonding



Specs:

- » Single, dual or triple 23.8" FHD or UHD displays
- » CPU: Single or dual Xeon / EPYC CPUs
- » Memory: Up to 4TB 3DS ECC RDIMM, DDR5-5600MT/s
- » GPU: High performance GPU or RTX 6000 Ada
- » Expansion Slots: Up to 7 expansion slots
- » Storage: Open
- » Dimensions:
 - » MegaPAC L1: 23.11" x 15.12" x 9.02"
 - » MegaPAC L2: 24.58" x 16.31" x 10.56"
 - » MegaPAC L3: 22.96" x 16.39" x 11.98"



Options:

- » Custom system configuration
- » 1000nits display
- » Touchscreens
- » Transit case
- » Modular Display Add-On
- » Integrated UPS Option
- » Touchscreen OCR bonding
- » Customization available
- » Custom I/O

Rugged

Multi-Display Workstations

MegaPAC L2 CR with UPS

The MegaPAC series is the most powerful portable command and control center in our product lineup. These extended-ATX compatible units can accommodate the latest Dual Xeon Scalable processors, the most advanced GPUs, and have seven full-length expansion slots available. High-powered fans efficiently cool the unit, preventing overheating even during demanding applications. With large 23.8" UHD 1000-nit displays, critical details are easily viewable even in harsh sunlight. An integrated UPS power system ensures continuous operation during unexpected power failures.

This powerhouse of a system is suitable for C6ISR, training and simulation, UAV ground control, drone/threat detection and as a communications suite. In comparison with the more compact NotePAC series, this full-size series has the space for any configuration imaginable.



MEGAPAC L2 CR UPS



MEGAPAC L2 CR UPS



Features:

- » High brightness sunlight readable displays
- » Full sized rugged portable workstation or server
- » High performance and flexible configurability
- » Rolling case for easy transport
- » Integrated Uninterruptible power supply
- » 20 minutes uninterruptible power



Specs:

- » Dual 24" WXGA display
- » Intel Xeon processor with 512GB ECC RDIMM
- » High performance RTX A5000 GPU
- » Dual-Boot with Windows and Linux
- » 2x 10GbE connectivity
- » 800W power supply with UPS
- » Dimension: 24.58" x 16.31" x 10.56"



Options:

- » Custom system configuration
- » 1000nits display
- » Touchscreens
- » Customization available
- » Custom I/O

Rugged

Multi-Display Workstations

23.8" Modular Display Add-On for MegaPAC Series

The MegaPAC series can be enhanced with a modular display add-on. This additional display allows for even more screen space and display configurations. This easy to attach additional display easily mounts to the top of the center of the unit in less than a minute. The increase in screens greatly increases efficiency and productivity. When compared to single-monitor settings, organizations that used two or more displays were able to enhance productivity significantly.

The extra screens are suitable for displaying mission critical applications and for displaying geographic map materials and GIS data.



MEGAPAC L3 WITH 23.8" ML3 MODULAR DISPLAY ADD-ON



23.8" ML3 MODULAR DISPLAY ADD-ON



Features:

- » Modular Display
- » Modular design with USB connection
- » Low power consumption
- » Quick deployment
- » Supports DP and HDMI connections
- » Compatible with:
 - » MegaPAC L3: Up to 6 total displays



Specs:

- » 23.8" 16:9 UHD display
- » 540 nits for UHD
- » Dimension: 22.58" x 16.38" x 4.78"



Options:

- » Custom system configuration
- » Customization available
- » Custom I/O

Rugged

Multi-Display Workstations

Compact Rugged MilPAC III Lite

The next generation of the MilPAC III is more compact, user friendly, and powerful. The MilPAC III Lite has triple multi-point touchscreen displays that fold into a compact package without requiring a keyboard for protection. This system has built in HDMI ports on the top of the unit for simple display cloning while on the go. A thoughtfully placed CAC reader on the side of the unit provides secure system access to DoD networks. 2 M.2 slots and 6 2.5" SSD slots provide more than enough storage space for highly sensitive data. The MilPAC III Lite is also compatible with the latest Quadro RTX GPUs and Dual Intel Xeon Scalable processors.

The MilPAC III Lite is suitable as a deployable command and control center for GIS, C6ISR and other intelligence applications.



MILPAC III LITE WITH OPTIONAL KEYBOARD



MILPAC III LITE



Features:

- » Multi-point touch screens
- » Triple HDMI outputs for display mirroring
- » Keyboard-less design
- » 6x high capacity removable storage



Specs:

- » Triple 17.3" FHD 144Hz LED displays
- » CPU: Single or Dual Intel Scalable Xeon processors
- » Memory: Up to 4TB 3DS ECC RDIMM, DDR5-5600MT/s
- » GPU: High performance GPU or RTX 6000 Ada
- » Expansion Slots: 5 expansion slots
- » Storage: open
- » Dimensions: 19.24" x 15.30" x 9.14"



Options:

- » Custom system configuration
- » 1000nits display
- » Rugged Silicone keyboard
- » Customization available
- » Custom I/O

Rugged

High Density Workstation

MILPAC SRHD with Rugged Quick Removable drives

The MilPAC SRHD is a portable system for applications requiring high storage capacity. This system is built to sustain multi-gigabit per second recording of network traffic with zero packet drops. Our revolutionary caddy design allows users to remove 4 drives simultaneously for increased convenience and efficiency.

With multiple hard drives, the MilPAC SRHD maximizes storage capacity and ensures data redundancy, making it ideal for high-performance, data-critical applications. Simultaneously recording and storing large volumes of data across multiple drives boosts system efficiency and adds a crucial layer of data security.

Built for cybersecurity and network analysis, the rugged MilPAC SRHD offers exceptional durability in extreme environments. Heavy-duty metal and rubber bumper corners protect the unit from impacts, making it perfect for offsite locations, labs, and military bases.



MILPAC SRHD



MILPAC SRHD



Features:

- » 16x Hot-Swappable storage slots for 2.5" SSD
- » Remove storage drives one by one or in sets of fours
- » Rubber bumpers keep the unit protected from vibration and shock
- » Lightweight and compact storage platform
- » MIL-STD- 461 / MIL-STD- 810G / MIL-STD- 901E



Specs:

- » 17.3" 16:9 FHD display
- » CPU: Single Xeon
- » Memory: Up to 4TB 3DS ECC RDIMM, DDR5-5600MT/s
- » GPU: High performance GPU
- » Expansion Slots: Up to 5 expansion slots
- » Storage: open
- » Dimensions: 18.0" x 14.5" x 8.25"



Options:

- » Custom system configuration
- » 1000nits display
- » Touchscreens
- » Customization available
- » Custom I/O

Rugged Portable Workstations

FlexPAC L1 & L3 with 18.5" displays

The FlexPAC series is our legacy system that has withstood the test of time. The latest redesigned FlexPAC is sleeker, more powerful, and more rugged than ever. The FlexPAC supports dual Xeon CPUs and a RTX4080 GPU with 7 expansion slots available. The large 18.5" display is protected by a full size keyboard and touchpad cover. The large handle and rubber bumpers help with making transportation of the unit extremely easy.

This has been one of our top-selling systems, due to its versatility and configurability. Like the name suggests, the FlexPAC is suitable for a wide range of applications. This is an ideal standard sized system, more powerful than the single display NotePAC and more compact than the single display MegaPAC.



FLEXPAC L3



FLEXPAC L1



Features:

- » Standard sized rugged portable workstation or server
- » High performance and flexible configurability
- » High performance liquid cooling
- » Wide Temperature Operating Range:
Operating Temperature: -30 ~ 80 °C



Specs:

- » Single or triple 18.5" FHD displays
- » CPU: Single or dual Xeon / EPYC CPUs
- » Memory: Up to 4TB 3DS ECC RDIMM, DDR5-5600MT/s
- » GPU: High performance GPU or RTX 6000 Ada
- » Expansion Slots: Up to 7 expansion slots
- » Storage: open
- » 850W power supply
- » Dimensions:
-FlexPAC 385 L1: 18.46" x 14.87" x 9.02"
-FlexPAC 385 L3: 18.46" x 14.87 x 9.62"



Options:

- » Custom system configuration
- » LCD heater supporting -20°C
- » Integrated uninterruptible power supply
- » 1000nits display
- » Touchscreens
- » 1200W power supply
- » Customization available
- » Custom I/O

Rugged

Multi-Display Workstations

18.5" Modular Display Add-On for FlexPAC Series

The FlexPAC Series can be enhanced with a modular display add-on. This additional display allows for even more screen space and display configurations. This additional display is easy to attach and mounts to the top center of the unit in less than a minute. The increase in screens greatly increases efficiency and productivity. When compared to single-monitor settings, organizations that used two or more displays were able to enhance productivity significantly.

The extra screens are suitable for displaying mission critical applications and for displaying geographic map materials and GIS data.



FLEXPAC L3 WITH 18.5" MODULAR DISPLAY ADD-ON



18.5" MODULAR DISPLAY ADD-ON



Features:

- » Modular Display
- » Modular design with USB-C connection
- » Low power consumption
- » Quick deployment
- » Wide operating temp
- » Compatible with:
 - FlexPAC L3: Up to 4 total displays



Specs:

- » 18.5" 16:9 FHD display
- » Dimension: 17.72" x 12.65" x 2.1"



Options:

- » Custom system configuration
- » Customization available
- » Custom I/O

Rugged Portable Workstations DuraPAC

The DuraPAC product is a robust portable computer built using all aluminum sheet metal to provide tough, go-anywhere unit suitable for tough environments and mobile applications. With the 17.3", HD LCD display and 4-expansion slots design, the DuraPAC can easily fulfill the requirements for digital media related applications in the broadcasting market. The DuraPAC can also be configured with many special add-on cards tailored to your specific unique applications.

Every unit comes equipped with cooling fans and easy access to its expansion slots for immediate system upgrade or maintenance. With its elegant design and rugged construction, the DuraPAC is the most durable and versatile portable platform for your applications.



DURAPAC



DURAPAC



Features:

- » Compact and versatile design
- » Cost effective solution for wide range of applications



Specs:

- » 17.3" 16:9 FHD display
- » CPU: Single Intel Core or Xeon
- » Memory: Up to 4TB 3DS ECC RDIMM, DDR5-5600MT/s
- » GPU: High performance GPU or RTX 6000 Ada
- » Expansion Slots: Up to 4 expansion slots
- » Storage: open
- » Dimensions: 16.50" x 13.62" x 7.25"



Options:

- » Custom system configuration
- » 1000nits display
- » Touchscreens
- » Customization available
- » Custom I/O

Rugged Portable Workstations

DuraPAC Lite

The DuraPAC Lite product is a robust portable computer meticulously built using all aluminum sheet metal, providing a tough, go-anywhere unit that is ideal for harsh environments and demanding mobile applications. Designed for versatility, it features 2-expansion slots, allowing users to customize the system with uniquely designed add-on cards for a wide variety of applications, from advanced data processing to specialized field operations. Despite its durability, the DuraPAC Lite maintains a slim and lightweight profile, fitting comfortably inside an airplane compartment, making it perfect for professionals who require mobility.

The optional touch screen further enhances its usability by eliminating the need for a keyboard, making our slimmest and lightest system even more compact, while offering intuitive operation in space-constrained environments.



DURAPAC LITE



DURAPAC LITE



Features:

- » Sub-compact and lightweight design
- » 2 Full length slots for add-in cards



Specs:

- » 17.3" 16:9 FHD display
- » CPU: Single Intel Core or Xeon
- » Memory: Up to 4TB 3DS ECC RDIMM, DDR5-5600MT/s
- » GPU: Intel UHD Graphic
- » Expansion Slots: 2 expansion slots
- » Storage: open
- » Dimensions: 16.41" x 12.40" x 4.39



Options:

- » Custom system configuration
- » 1000nits display
- » Touchscreens
- » Customization available
- » Custom I/O

Rugged Portable Workstations

TransPAC - Battery Powered System

For added mobility and portability, the TransPAC is a new and unique battery-powered solution. While most of our products are portable because of their compact form factor and light weight, the TransPAC takes it one step further; it is battery-powered.

Supporting a 220W power supply with 4x Li-ion 81Whr battery packs, you can use the TransPAC on the field for extended periods. It comes with a full HD display and can hold up to 16TB of HDD storage or 8TB of SSD storage. It is manufactured from high-strength, low weight aluminum creating a robust, powerful, reliable and ergonomic portable system. Featuring powerful computing elements, this portable can be configured to fulfill many demanding applications, especially for ones that are on the field.



TRANSPAC



TRANSPAC



Features:

- » Compact and rugged battery-powered workstation
- » Configurable with the latest Intel Core or AMD processor
- » Hot-swappable Li-ion battery packs



Specs:

- » 17.3" FHD display
- » Intel core processor
- » Integrated HD graphic
- » 4x removable batteries
- » Dimensions: 16.46" x 14.46" x 6.96"



Options:

- » Custom system configuration
- » 1000 nits display
- » External battery charging station
- » Customization available
- » Custom I/O

Rugged

Portable KVM

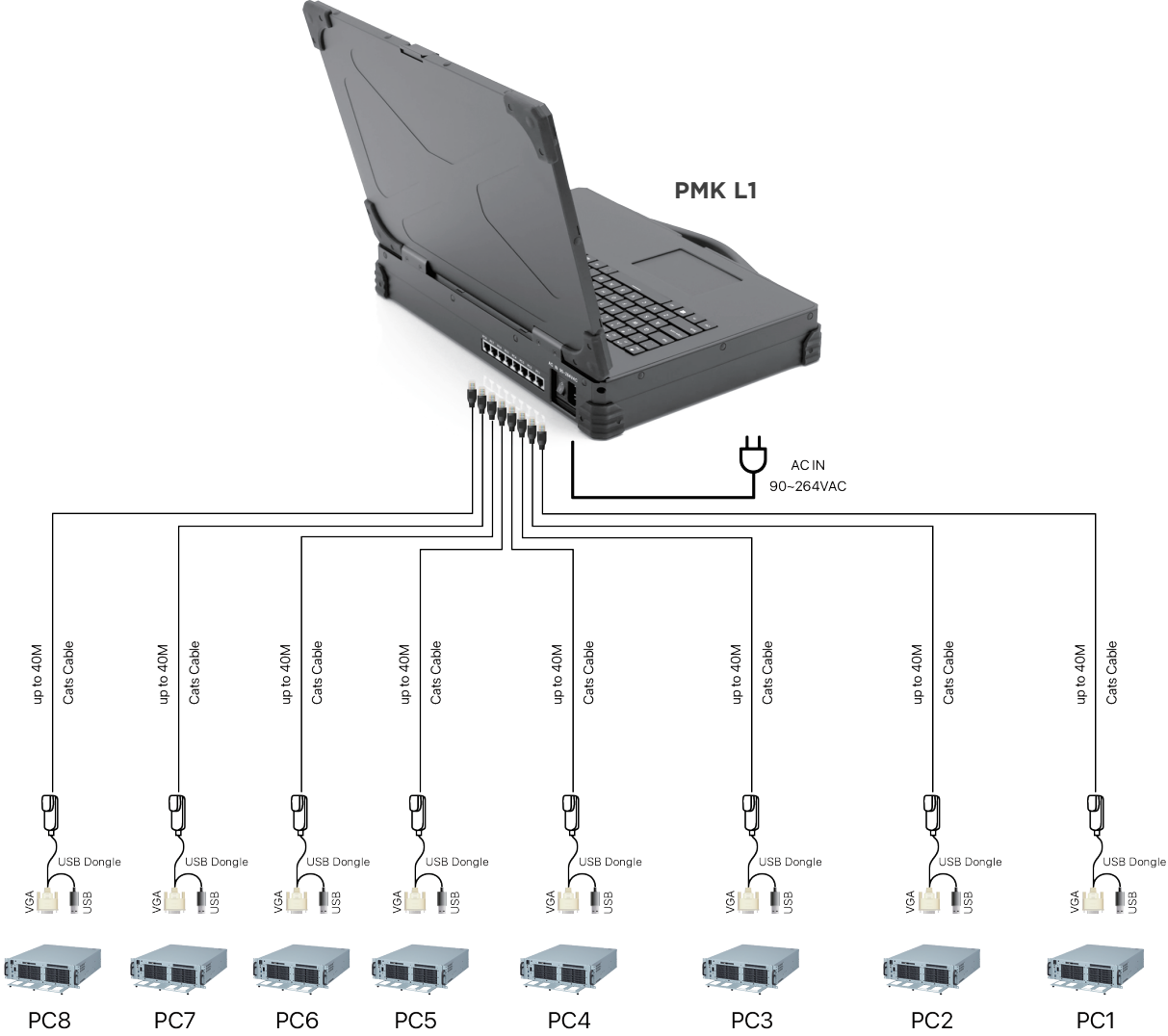
PMK L1 with 8-port KVM

The PMK enables users to access up to eight computers, servers, or KVM switches, offering seamless control in a centralized setup. Set your PMK at a convenient and suitable control field for optimal efficiency. With this unit, you can remotely control systems up to 130 feet away, making it ideal for managing multiple devices in larger spaces.

Designed for use in challenging environments, the PMK is built to withstand harsh conditions while maintaining reliable performance. Its plug-and-play functionality ensures quick and easy setup, allowing you to integrate and manage your devices effortlessly. The PMK allows you to mix and match a variety of sources, providing control of them from one keyboard and one Touch PAD. It supports a wide range of video inputs, including DisplayPort, HDMI, DVI, and VGA, all in Full HD, ensuring compatibility with diverse devices and delivering high-quality visuals. This versatility makes the PMK an indispensable tool for streamlined system management in any environment.



PMK L1



Features:

- » Notebook style portable KVM
- » Easy and intuitive operation
- » Control up to 8 remote servers
- » Up to 40 meter of safe and remote operation
- » Battery powered operation



Specs:

- » 17.3" 16:9 FHD display
- » 8x RJ-45 style KVM ports
- » Supports VGA, DP, DVI and HDMI video interfaces
- » Dimension: 17.4" x 12.2" x 3.26"



Options:

- » Custom system configuration
- » Battery pack
- » DP, DVI, HDMI video interfaces
- » External Battery charging station
- » Swappable battery pack
- » Customization available
- » Custom I/O

Rugged Display Solutions

BCCD 173 with triple 17.3" displays

The Bi-Fold Command and Control Display (BCCD) is an innovative solution that enhances your portable computing setup by allowing you to quickly and efficiently add extra screens. Its compact, lightweight design makes it the perfect companion for your portable workstation or rugged laptop. It fits easily into any environment without adding bulk. The BCCD's adaptability ensures seamless integration with any existing system setup, offering multiple configuration options. You can choose to connect all three screens via a single USB 3.0 connector or use individual HDMI, DVI, VGA, and DP inputs, depending on your needs. Another unique feature that makes the BCCD stand out is that it is battery powered. Easily set up the BCCD anywhere and anytime regardless of power source.

This triple screen display solution is ideal for applications like data analysis, video editing, and high-resolution monitoring, making it perfect for professionals in security, surveillance, and media production who require detailed visuals and expansive workspaces.



BCCD 173



BCCD 173



Features:

- » USB Type-C interface
- » Compatible with Box PC and laptops
- » Compatible with Windows, MAC OS
- » Battery powered



Specs:

- » Triple 17.3" 16:9 FHD or 4K displays
- » Video Input Interface:
 - FHD: Type-C x 1
 - 4K: DP x 3
- » 300 nits display
- » 800:1(Typical) Contrast Ratio
- » Dimension: 18.46" x 15.67" x 5.6"
- » Supports VESA mount



Options:

- » 1000nits display
- » DC power supply
- » Customization available

Rugged Display Solutions

BCCD 270 with triple 27" displays

The BCCD 270 is a rugged display solution specifically designed for the defense industry and other professional applications requiring expansive, high-resolution visuals.

Equipped with three 27-inch large displays, the BCCD 270 delivers sharp, detailed, and immersive visuals, making it ideal for battlefield command, geospatial analysis, military simulation training, multi-channel monitoring, and other mission-critical scenarios demanding real-time data integration. Its robust design and IP 45-rated displays ensure reliability in harsh environments, including outdoor deployments or rugged terrains. With its battery-powered capability, the BCCD 270 operates seamlessly in remote locations without reliance on fixed power sources, offering a highly flexible solution for field operations and mobile command centers.

The BCCD 270 supports multiple connectivity options, including USB, HDMI, and DP, enabling seamless integration with military workstations, command systems, and mobile terminals. Whether deployed in command centers, vehicle-mounted setups, or temporary field camps, the BCCD 270 provides professionals with a top-tier triple-display solution to enhance operational efficiency, precision, and mission success.



BCCD 270



BCCD 270



Features:

- » Connect easily through USB, HDMI or DP
- » Compatible with all laptops and notebook systems
- » Rugged design for mobile applications
- » IP 45 Rated rugged displays
- » Battery powered



Specs:

- » Triple 27" 16:9 FHD or 4K displays
- » Video Input Interface:
 - FHD: Type-C x 1
 - 4K: DP x 3
- » 300 nits display
- » 1300:1(Typical) Contrast Ratio
- » Dimension: 26.61" x 19.27" x 7.4"
- » Supports VESA mount



Options:

- » Custom system configuration
- » Supports VGA interface
- » 1000nits display
- » Touchscreens
- » UHD display
- » Battery
- » Support upto 4 displays
- » Customization available

Rugged Display Solutions

18.5" Modular Display Add-On for BCCD 270

BCCD 270 can be enhanced with a 18.5" modular display add-on. This additional display allows for even more screen space and display configurations. This additional display is easy to attach and mounts to the top center of the unit in less than a minute. The increase in screens greatly increases efficiency and productivity.

When compared to single-monitor settings, organizations that used two or more displays were able to enhance productivity significantly. The extra screens are suitable for displaying mission critical applications and for displaying geographic map materials and GIS data.



BCCD 270 WITH 18.5" MODULAR DISPLAY ADD-ON



18.5" MODULAR DISPLAY ADD-ON FOR BCCD 270



Features:

- » Modular design with USB-C connection
- » Low power consumption
- » Dedicated Auto-Switching power supply



Specs:

- » 18.4" 4K or 18.5" FHD display
- » Video Input Interface:
 - 18.5" FHD: DP x1 or USB 3.0 x1 or Type-C x1
 - 18.4" 4K: DP x1 or USB 3.0 x1 or Type-C x1
- » 350 nits display
- » 1000:1(Typical) Contrast Ratio
- » Dimension: 19.13" x12.53" x2.08"



Options:

- » 1000nits display
- » Touchscreens
- » Customization available
- » Custom I/O

Portable Transit Case

Hard Transit Case(Optional Upgrade)

Protect each portable workstation in transportation with MIL-STD hard transit cases. These cases are airtight, waterproof, and dustproof, ensuring your equipment stays protected in the toughest conditions. They also come with pressure relief/breather valves to maintain optimal pressure levels. The foam inside the case is laser-cut to the exact dimensions of your product, providing an added protective layer of padding and ensuring a snug fit.

These cases are engineered to withstand extreme temperatures and impacts, making them ideal for harsh environments where durability is crucial.



CUSTOMIZED SKB TRANSIT CASE
WITH CUSTOM FOAM



CUSTOMIZED ZARGES TRANSIT CASE
WITH CUSTOM FOAM



Features:

- » Mil-STD Case
- » Dustproof and Waterproof
- » IP 65 rating
- » Resistant to corrosion and impact damage
- » Custom water-jet cut foam



Specs:

- » Ultra high strength MIL- STD 810H design
- » Gasket-sealed, water and dust tight, submersible design
- » Resistant to corrosion and impact damage
- » Ultra high strength MIL- STD 810H design
- » Resistant to corrosion and impact damage



Options:

- » Different foam and material available
- » Custom-cut foam for all your equipment and accessory
- » Customization available

Rackmount Flight Case Displays

RMSDU, RMDDU, RMTDU

The RMSDU, RMDDU, and RMTDU are our rackmount display units offered in either a single, double, or triple display configuration. Each display system has been thoughtfully designed to be space efficient while not sacrificing screen size and resolution. The displays can be easily transported and set up, then stored away by folding, rotating and sliding into the drawer.

The RMSDU (rackmount single display unit) provides a large 23" display available in a compact 1U rack. The RMDDU (rackmount dual display unit) employs two 16:9 format FHD 1920x1080 LCD displays in a 2U rackmount package only 24" deep. The RMTDU (rackmount triple display unit) is a an impressive 3U rackmount with an integrated keyboard drawer and three 19" LCD monitors. Each display has an independent OSD control (power, contrast, brightness, video), allowing independent panel control or control of all panels simultaneously.



RMSDU

RMTDU



RMDDU



Features:

- » Displays tilt for easy viewing
- » Backlit keyboard and resistive touchpad
- » Input Options: USB, VGA, DVI-D, or Displayport
- » MIL-STD-461 / MIL-STD-810G
- » Full range power supply
- » Short depth design



Specs:

- » RMSDU: 1U Rack Height; Single 23" FHD 16:9
- » RMDDU: 2U Rack Height; Dual 17.3", 19" or 23" FHD 16:9
- » RMTDU: 3U Rack Height; Triple 17.3", 19" FHD 16:9
- » FHD 16:9 (Optional Touch Screen)
- » Dimension:
 - RMSDU: 1.7" x 17.76" x 31.80"
 - RMDDU: 3.4" x 17.76" x 25.89"
 - RMTDU: 5.1" x 17.76" x 25.80"



Options:

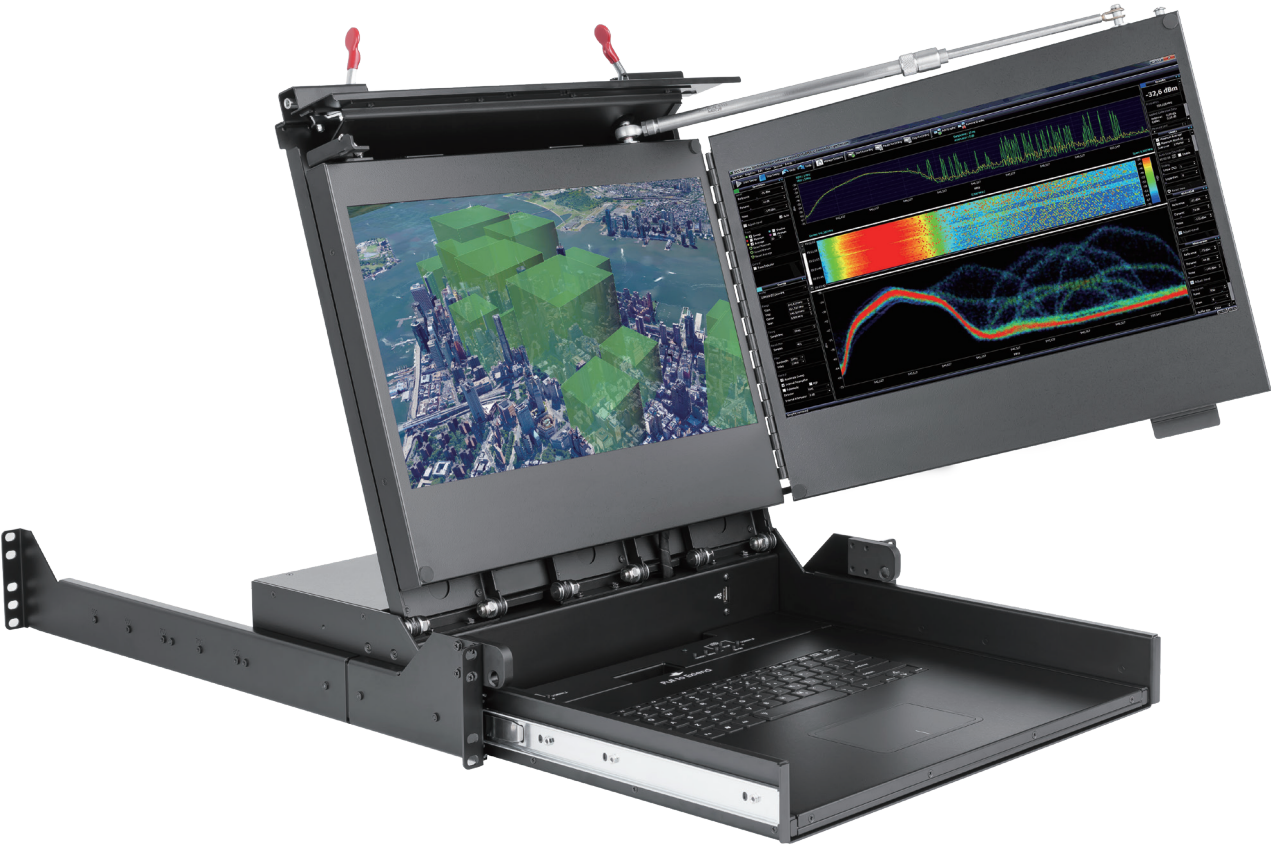
- » Custom trackball
- » Customization available
- » Custom I/O

Rackmount Flight Case Displays

RMDDU 173A with dual 17.3" displays

The RMDDU 173A is a rugged 2U rack-mount drawer designed with dual-screen monitors. The displays fold together, then down, and slide into the unit, providing a secure and efficient storage mechanism that minimizes the risk of damage during transport or when not in use.

This innovative design makes the RMDDU 173A an ideal choice for military transit case applications, as well as command and control centers where space, durability, and ease of deployment are critical. The compact 2U rack-mount display drawer uses a secure all-aluminum monitor mounting and stabilization design necessary for robust government & defense, communications and industrial automation applications.



RMDDU 173A



RMDDU 173A



Features:

- » Displays tilt for easy viewing
- » Backlit keyboard and resistive touchpad
- » Input Options: USB, VGA, DVI-D, or Displayport
- » MIL-STD-461 / MIL-STD-810G
- » Full range power supply
- » Short depth design



Specs:

- » RMDDU 173A : 2U Rack Height; Dual 17.3" FHD 16:9
- » 2x USB pass through inputs on front
- » 1x USB inputs on rear,
- » Analog VGA, DVI-D, HD-SDI
- » S Video-in for each display



Options:

- » Custom trackball
- » Customization available
- » Custom I/O

Rackmount Flight Case Displays

RMDDU 173V with dual 17.3" displays

The RMDDU 173V is a rugged 3U rack-mount drawer with dual-screen monitors. The displays fold together, then down, and slide in for storage.

It is an ideal match in military transit case applications and command & control centers. The compact 3U rack-mount display drawer uses a secure all-aluminum housing and SUS304 stainless steel front panel provide enhanced durability and corrosion resistance.

With its backlit keyboard, integrated trackball pointing device, and versatile input options (VGA, HDMI, USB 3.0), the RMDDU delivers a user-friendly experience for mission-critical operationsstabilization design necessary for robust government & defense, communications and industrial automation applications.



RMDDU 173V



RMDDU 173V



Features:

- » Displays tilt for easy viewing
- » 105-key backlit keyboard and integrated 3-button trackball pointing device (left, right, middle).
- » Input Options: VGA, HDMI
- » SUS304 stainless steel front panel with corrosion resistance.
- » Adjustable installation depth (550-850mm ±10mm) for 19-inch rack.



Specs:

- » RMDDU 173V : 3U Rack Height; Dual 17.3" FHD 16:9
- » 800 nits display
- » Trackball pointing device
- » Vertical display orientation
- » Dimesions: 23.62" x 15.67" x 5.24"



Options:

- » Custom trackball
- » Customization available
- » Custom I/O

Rugged Rackmount Servers

RMS 100, 200 & 300

The RMS series are short-depth, high-performance rugged rack servers. Leveraging the latest commercial technology, these servers have the capacity to process and store large amounts of data efficiently in challenging environments. These rugged edge servers are built for demanding applications, such as AI, security, and tactical workloads in extreme settings.

These rack servers are built to meet MIL-STD specs to withstand shock, vibration, and extreme temperatures. The redundant full range power supply allows users to swap out defective components without any disruptions. With multiple configurations, upgrades, and heights available, there are a variety of options to choose from.



RMS 100

RMS 300



RMS 200



Features:

- » Dual Xeon processors
- » MIL-STD-461 / MIL-STD-810G / MIL-STD-901E
- » Redundant full range power supply
- » Short depth design



Specs:

- » RMS 100: 1U
 - Intel dual Xeon scalable processors
 - Up to 3TB 3DS ECC RDIMM memory
 - 9 removable 2.5" drives, 2 FH & 1 LP slots
 - 800 Watt redundant power supply
- » RMS 200: 2U
 - Intel dual Xeon Scalable processors
 - Up to 768GB ECC RDIMM memory
 - 16+1 removable 2.5" drives, 7 LP slots
 - 800 Watt redundant power supply
- » RMS 300: 3U
 - Intel dual Xeon Scalable processors
 - Up to 2TB 3DS ECC RDIMM memory
 - 24+1 removable 2.5" drives, 7 FH slots
 - 800 Watt redundant power supply
- » Dimension:
 - RMS 100: 1.7" x 18.9" x 20"
 - RMS 200: 3.4" x 18.9" x 19.7"
 - RMS 300: 5.1" x 18.9" x 19.7"



Options:

- » Custom system configuration
- » Flexible system board
- » DC power supply
- » Flexible drive bay configuration
- » Customization available
- » Custom I/O

Rackmount KVM

SMK920, 980, 990

The integration of data and video, and voice communication in computers and the subsequent technological advances have spawn many sophisticated CTI applications that have become accessible and affordable to the small and mid-sized business. The increasing CTI applications coupled with the growing demand for corresponding hardware and systems have created a dilemma: How does one pack the growing number of equipment into an existing space?

Acme’s 1U slim industrial monitor keyboard, the SMK, is the solution for compacting more computing power into limited space. This revolutionary monitor keyboard combines a spectacular display coupled with a keyboard with built-in pointing device in a compact unit that measures only 1U in height. Occupying a fraction of the space of traditional monitor and keyboard units, the installation of the SMK leaves ample space for other critical components. With built-in analog-to-digital conversion board, the SMK can be connected to any standard VGA graphics card for immediate On Screen Display. The monitor key-board unit has a built-in slide rail and mounts easily onto any 19” rackmount cabinet.



SMK990



SMK920



SMK980



SMK990



Features:

- » Slim 1U rack mount LCD console with up to 16x KVM switches
- » Multiple input interfaces including USB and PS2
- » Wide operating temperature range
- » High quality and good performance



Specs:

- » 17.3” 1920x1080 resolution
- » 17” and 19” 1280 x 1024 resolution
- » Optical Sensor
- » Dimension:
 - SMK920 HD: 1.7” x 17.42” x 16.1”
 - SMK920: 1.7” x 17.42” x 19.68”
 - SMK980/990: 1.7” x 17.42” x 23.62”



Options:

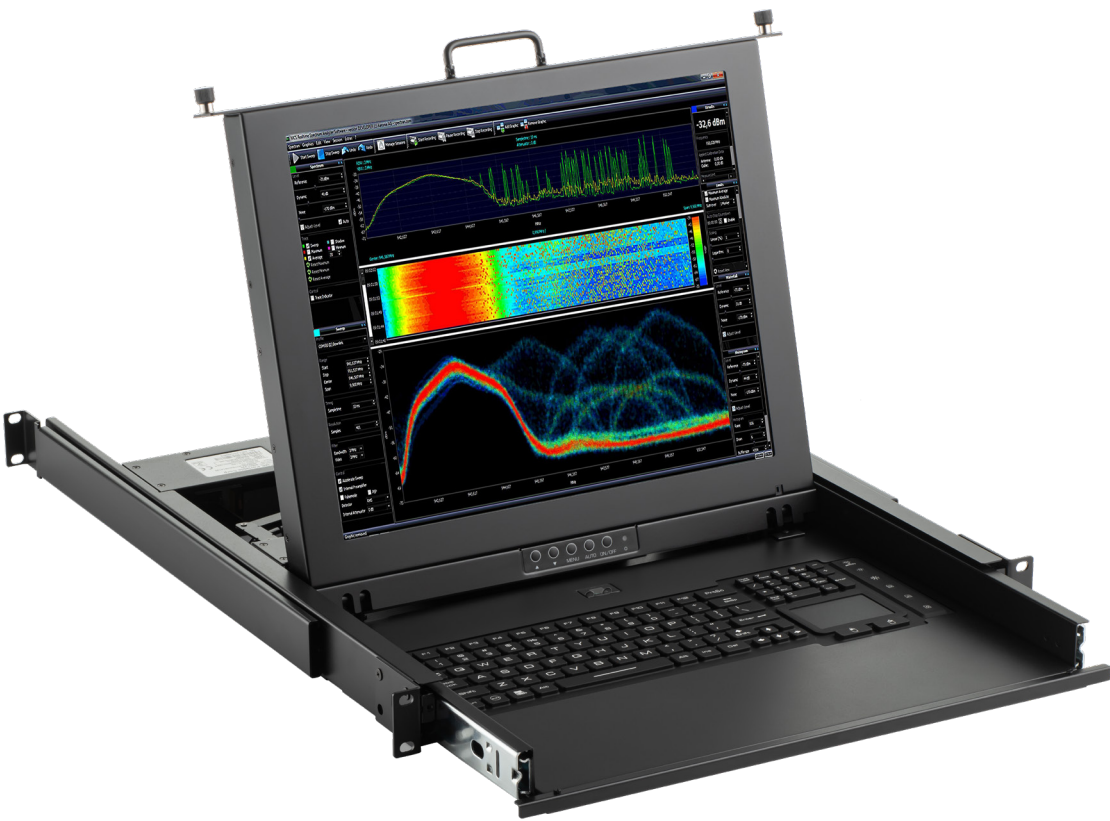
- » 1000 nits display with AG and AR coating
- » Integrated resistive touchscreen
- » 3-stage brightness optical sensor
- » Silicone keyboard with touchpad
- » Custom system configuration
- » Custom I/O

Rackmount KVM

SMK920-17-Rugged

ACME’s 1U slim industrial monitor keyboard, the SMK, is the solution for optimizing space while delivering powerful performance. This cutting-edge device is designed to compact more computing power into limited spaces without compromising on functionality. Featuring a sleek design that measures just 1U in height, the SMK integrates a high-resolution, high-brightness display, ensuring clarity and visibility even in challenging lighting conditions.

The unit also includes a full keyboard with a built-in pointing device for ease of use, making it a highly efficient tool for mission-critical applications. To further enhance usability, the SMK is equipped with an optical sensor for precise control, AG/AR coating to reduce glare and reflections, and an intuitive touchscreen interface. Whether you’re working in industrial environments or high-demand operations, this revolutionary SMK unit offers the perfect blend of performance, compactness, and durability, making it an essential component for your computing needs.



SMK920-17-RUGGED



SMK920-17-RUGGED



Features:

- » Slim 1U rack mount LCD console
- » Integrated resistive touchscreen
- » 3-stage brightness optical sensor
- » Silicone keyboard with touchpad
- » Front side IP rating against grease, dusty and liquid



Specs:

- » 17” display at 1280x1024 resolutions
- » 1000 nits display with AG and AR coating
- » Short depth at 18.89” deep.



Options:

- » 17” display at 1280x1024 resolutions
- » 1000 nits display with AG and AR coating
- » Short depth at 18.89” deep.
- » Custom system configuration
- » Custom I/O

Portable & Rackmount Interface and Power Cables

Custom interconnecting cables for Acme products and equipments

Acme can also upgrade your system with a wide range ruggedized interfaces, cables, and accessories. These Mil-Spec interfaces and cables comply with MIL-STD-810G and MIL-STD-461F and are intended for use in military and aerospace applications. MIL-Spec cables perform well in applications requiring absolute reliability in physically demanding environments. These customizations are built to withstand even the harshest environments in applications ranging from battlefields and Navy ships to jet fighters.

Cable assemblies are built with EMI overbraid terminated with banding adapters and are protected from abrasion with Gorilla Sleeve. Cable plugs can be supplied with full backshells and/or shrink boots. Continuity and Hi Pot testing is performed on all cables as part of the manufacturing process. For aircraft operations, Teflon wire and LSZH cable jacketing is available. Cable labeling is provided per MIL-STD-130 with a protective over coating.



- Features:
- » Amphenol connectors
 - » High Reliability
 - » Field installable & serviceable
 - » complete solutions and configurable



- Specs:
- » 100% compatible with MIL - DTL - 38999
 - » RoHS compliant



- Options:
- » Custom I/O

Custom Options

- » Customized to meet environmental, EMC, TEMPEST, Zone 1/2 and other compliance requirements
- » Power Solutions – Battery and UPS Power
- » Display – High brightness & Touchscreen
- » Specialty Connectors – MIL – SPEC
- » Custom Interfaces and Integration
- » Brackets, Mounts and Screws
- » Custom Logo & Color
- » OEM or ODM
- » And More



Our in-house R&D team will take your requirements to design custom solutions, from making modifications to our standard products to creating fully custom systems. Sales engineers are there every step of the way to manage certification requirements, quantity, price, and schedule.

Not finding the product you are looking for?
Visit our website or contact us today.

Acme Portable Machines, Inc. 1330 Mountain View Circle Azusa, CA 91702 USA Phone: (626) 610-1888 Email: sales@acmeportable.com www.acmeportable.com	Acme Portable Computer GmbH Benzstraße 15 76185 Karlsruhe, Germany Phone: +49 (0) 721-570 453-0 Email: info@acmeportable.de www.acmeportable.de	Acme Portable Computer TW 5F, No. 25, Wu Chuan 3rd Road, Wu-Ku Ind. Park, New Taipei City, Taiwan Phone: +886 (2) 2298-3636 Email: info@acmeportable.com.tw www.acmeportable.com.tw
---	---	---

PRODUCT MATRIX

Use this matrix as a quick guide to ACME Portable’s rugged systems, servers, and KVM solutions. It provides key product highlights and directions to support your selection process.

No.	Product name	Type	Screens	Screen Size	Add-on Display	Expansion slots
1	NotePAC III Lite	System	3	17.3 "	(17.3 ")	1 x PCIe x8
2	NotePAC II Pro V	System	2	17.3 "	(17.3 ")	1 x PCIe x8
3	NotePAC III Pro V	System	3	17.3 "	(17.3 ")	1 x PCIe x8
4	MegaPAC L1	System	1	23.8 "	(23.8 ")	Up to 7
5	MegaPAC L2	System	2	23.8 "	(23.8 ")	Up to 7
6	MegaPAC L3	System	3	23.8 "	(23.8 ")	Up to 7
9	MegaPAC L2 CR	System	2	24 "	(23.8 ")	Up to 7
7	MegaPAC L2 CR UPS	System	2	24 "	(23.8 ")	Up to 7
8	MilPAC III Lite	System	3	17.3 "	-	5
10	MilPAC SRHD	System	1	17.3 "	-	Up to 5
11	FlexPAC L1	System	1	18.5 "	(18.5 ")	Up to 7
12	FlexPAC L3	System	3	18.5 "	(18.5 ")	Up to 7
13	DuraPAC	System	1	17.3 "	-	Up to 4
14	DuraPAC Lite	System	1	17.3 "	-	2
15	TransPAC	System	1	17.3 "	-	-
16	PMKL1	KVM	1	17.3 "	-	-
17	BCCD173	Display	3	17.3 "	-	-
19	BCCD270	Display	3	27 "	(18.5 ")	-
20	RMSDU	Display	1	17.3 "/23 "	-	-
21	RMDDU	Display	2	17.3 "/17 "/19 "/23 "	-	-
22	RMTDU	Display	3	17.3 "/17 "/19 "	-	-
23	RMDDU 173A	Display	2	17.3 "	-	-
24	RMDDU 173V	Display	2	17.3 "	-	-
25	RMS100	Server	-	-	-	-
26	RMS200	Server	-	-	-	-
27	RMS300	Server	-	-	-	-
28	SMK920	KVM	1	-	-	-
29	SMK980	KVM	1	-	-	2 FH + 1 LP
30	SMK990	KVM	1	-	-	7 LP
31	SMK920 17-Rugged	KVM	1	17 "	-	7 FH

Note:
● = Included ○ = Optional
- = Not Available () = Optional Configuration

No.	Product name	Processor	Dimensions(WHD)	Battery	Page
1	NotePAC III Lite	Core i7-13700E / Xeon D-2796NT	17.42 " 13.7 " 7.72 "	●	23
2	NotePAC II Pro V	Intel Xeon	17.2 " 13.2 " 6 "	-	25
3	NotePAC III Pro V	Xeon / Dual Xeon	17.42 " 13.7 " 7.72 "	○	26
4	MegaPAC L1	Dual Xeon / EPYC	23.11 " 15.12 " 9.02 "	-	32
5	MegaPAC L2	Dual Xeon / EPYC	24.58 " 16.31 " 10.56 "	-	31
6	MegaPAC L3	Dual Xeon	22.96 " 16.39 " 11.98 "	-	32
9	MegaPAC L2 CR	Dual Xeon	24.58 " 16.31 " 10.56 "	-	33
7	MegaPAC L2 CR UPS	Dual Xeon / EPYC	24.58 " 16.31 " 10.56 "	●	34
8	MilPAC III Lite	Dual Xeon	19.24 " 15.3 " 9.14 "	-	37
10	MilPAC SRHD	Xeon	18 " 14.5 " 8.25 "	-	39
11	FlexPAC L1	Dual Xeon / EPYC	18.46 " 14.87 " 9.02 "	-	41
12	FlexPAC L3	Dual Xeon / EPYC	18.46 " 14.87 " 9.62 "	-	42
13	DuraPAC	Intel Core / Xeon	16.5 " 13.62 " 7.25 "	-	45
14	DuraPAC Lite	Intel Core / Xeon	16.41 " 12.4 " 4.39 "	-	47
15	TransPAC	Intel Core	16.46 " 14.46 " 6.96 "	●	49
16	PMKL1	-	17.4 " 12.2 " 3.26 "	-	51
17	BCCD173	-	18.46 " 15.67 " 5.6 "	○	53
19	BCCD270	-	26.61 " 19.27 " 7.4 "	-	55
20	RMSDU	-	17.76 " 1.75 " 31.8 "	-	62
21	RMDDU	-	17.76 " 3.46 " 25.89 "	-	61
22	RMTDU	-	17.76 " 5.13 " 25.80 "	-	62
23	RMDDU 173A	-	17.76 " 3.46 " 25.89 "	-	63
24	RMDDU 173V	-	17.76 " 5.24 " 23.62 "	-	65
25	RMS100	-	17 " 1.75 " 20 "	-	68
26	RMS200	-	18.9 " 3.5 " 19.7 "	-	67
27	RMS300	-	18.9 " 5.25 " 19.7 "	-	68
28	SMK920	-	17.42 " 1.73 " 19.68 "	-	69
29	SMK980	Dual Xeon	17.42 " 1.73 " 23.62 "	-	70
30	SMK990	Dual Xeon	17.42 " 1.73 " 23.62 "	-	69
31	SMK920 17-Rugged	Dual Xeon	17.42 " 1.73 " 19.68 "	-	71

🔗 For full specs & datasheets, visit : <https://acmeportable.com>