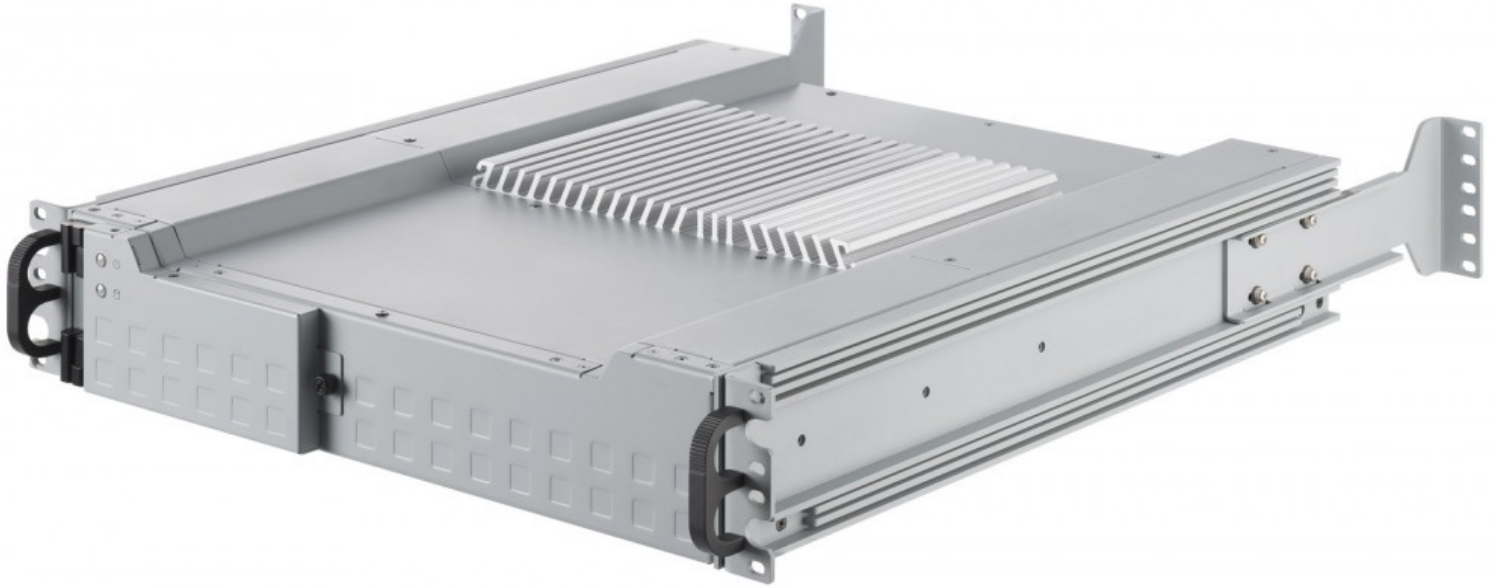




RMS 200



The RMS 200 is a 2U rackmount server with military connectors, ideal for practicing and simulating real-life military experiences.

Compact and Powerful

The RMS 200 was designed and developed to pack maximum power in a compact form factor. In only a 2U chassis, this unit can fit in almost any rack space while still offering incredibly high computing power.

Rugged Construction

While compact and powerful, the RMS 200 is also extremely rugged. With waterproof connectors, it is built to meet MIL-STD-810G requirements.

Technical Specifications

PRODUCT	RMS 200
CPU	INTEL I7-3610QE
MEMORY	WIDE TEMPERATURE RAM - 8 GB DDR3, UP TO 16 GB
GRAPHICS CARD	ON-BOARD GRAPHICS INTEL HD 4000 SUPPORTED WITH VGA, DVI-D PORTS UP TO 1920X1080
STORAGE	WIDE TEMPERATURE 1X 2TB SSD, SATAIII 6GB/S, WITH 2X 2.5" HDD REMOVABLE TRAY
PORTS	WATERPROOF CONNECTORS FOR 6X USB 2.0 PORTS, 6X GIGA LAN PORTS (NOT HUB), 1X COM PORT, 2X AUDIO OUT
POWER SUPPLY	150W AC INPUT 110-220V OR +10~36VDC INPUT ON REQUEST POWER INPUT CONNECTOR WITH MIL-DTL-26482 TYPE
OPTICAL DRIVE	1X DVD RW
DIMENSIONS	MECHANISM MEETS EIA/ECA-310 - 19" RACKMOUNT 2U, DEPTH: 500MM
WEIGHT	13,2 KG / 29.1 LBS
CABINET MOUNTING	WITH FIXED REAR EXTEND HOLDER UP TO 600MM (STD.), WITH JONATHAN RAILS UP TO 600MM (OPTIONS.)
TEMPERATURE	(OPERATING) MIL-STD-810G, METHOD 501.5, PROCEDURE II (0 ~ +60C), (STORAGE) MIL-STD-810G, METHOD 501.5, PROCEDURE I (-20 ~+80C)
VIBRATION	MIL-STD-810G, METHOD 514.6, PROCEDURE I, RANDOM GENERAL VIBRATION, FUNCTIONAL
SHOCK	MIL-STD-810G, METHOD 516.6, PROCEDURE I, SAW TOOTH WAVE, 20G/11MS, FUNCTIONAL
REGULATION	CE, FCC, ROHS

* The technical specifications are an example of the system's capabilities. They can be customized specifically for your needs. If you have any questions, feel free to contact one of our sales representatives.



Headquarters - USA

ACME Portable Machines, Inc.
1330 Mountain View Circle,
Azusa, CA, 91702, USA
Tel: +1 626.610.1888
Fax: +1 626.610.1881
www.acmeportable.com

Germany

ACME Portable Computer GmbH
Benzstraße 15,
76185 Karlsruhe, Germany
Tel: +49.721.570.4530
Fax: +49.721.570.45329
www.acmeportable.de

Taiwan

ACME Portable Corp.
5F, No 25, Wuquan 3rd Road,
Wugu Dist., New Taipei City 248,
Taiwan R.O.C
Tel: +886.2.2298.3636
Fax: +886.2.2298.3737
www.acmeportable.com.tw